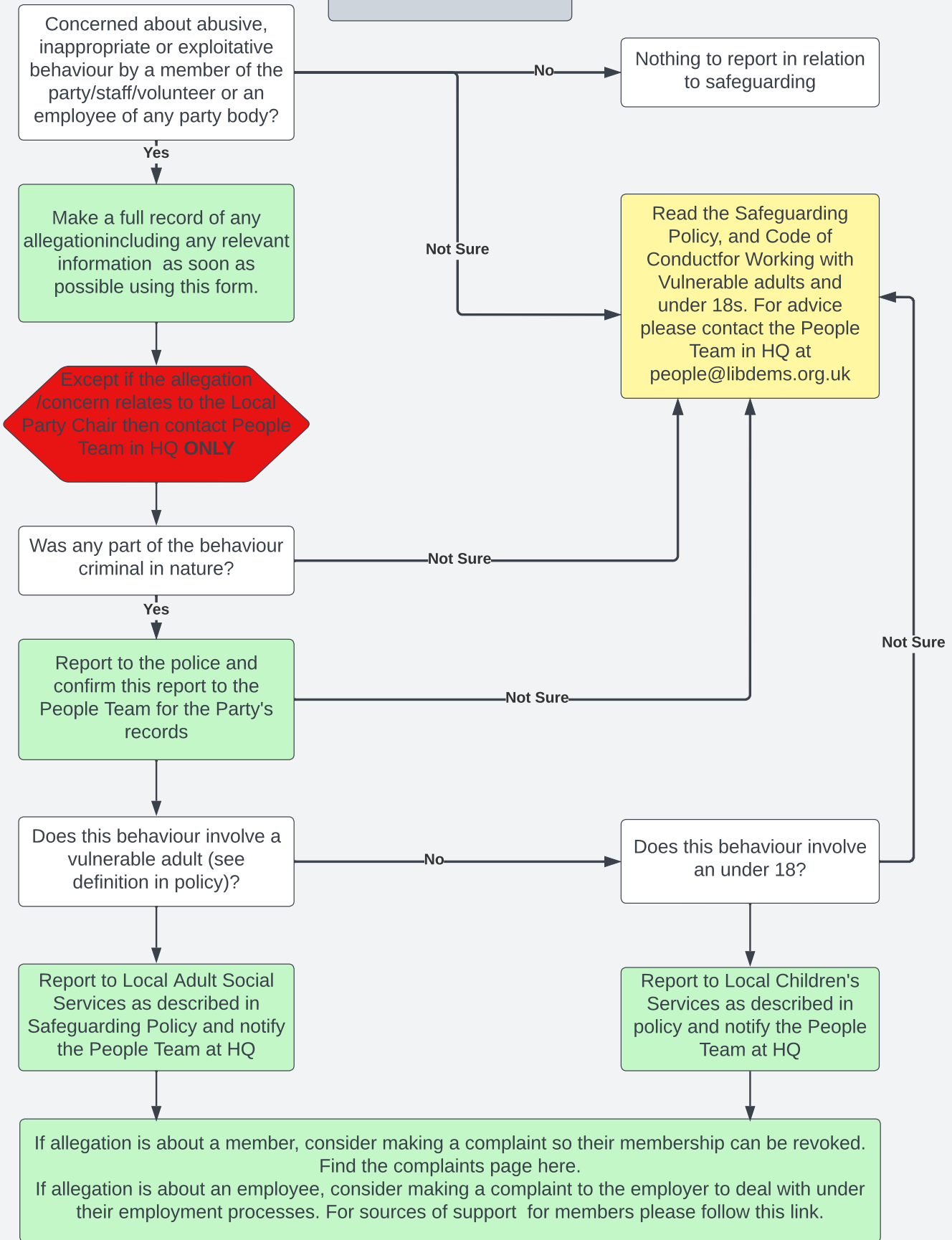


## Safeguarding Flowchart



It is not for you to decide whether something is criminal or abusive - only that it might be in which case the relevant agencies and / or police should be informed to make this decision. The police can also offer advice regarding safety at home and in the community and may refer people who have experienced violence, abuse or crimes to the Victim Support helpline - 08 08 16 89 111 or the chat function of the [Victim Support Website](#).

**The Safeguarding Officer for the Liberal Democrats is the The Head of People and Pastoral Office. Contact: [people@libdems.org.uk](mailto:people@libdems.org.uk) and phone: 07471 143 559.**